



Positively  
Penrith

# Business Events Guide



## STATEMENT OF RECOGNITION OF PENRITH CITY'S ABORIGINAL AND TORRES STRAIT ISLANDER CULTURAL HERITAGE

Council values the unique status of Aboriginal people as the original owners and custodians of lands and waters, including the land and waters of Penrith City.

Council values the unique status of Torres Strait Islander people as the original owners and custodians of the Torres Strait Islands and surrounding waters.

We work together for a united Australia and City that respects this land of ours, that values the diversity of Aboriginal and Torres Strait Islander cultural heritage and provides justice and equity for all.

## Positively Penrith

### You might think you know Penrith, but think again.

A thriving city set on the Nepean River and at the base of the Blue Mountains, Penrith offers a world of difference.

Located just 45 mins from the Sydney CBD, we are in close proximity and will be the only city connected by rail to the Western Sydney International (Nancy-Bird Walton) Airport. Think an adventurous and connected city, with open space and breathtaking views coupled with urban amenity and convenience. Yes, we're that place and we're positive you'll love it as much as we do.

Our city is on the rise, with big skies and bold vision, a place where innovation flourishes and creativity sparks. In fact, the perfect place to share your own vision, build your team or draw in a crowd.

Not only does Penrith offer world-class venues, but it will also surprise and delight you with a vibrant dining scene, spectacular outdoor adventures, thrilling adrenaline attractions, fascinating historical treasures and a diverse arts and cultural scene.



## Contents

Positively Penrith	2
Location & Getting Here	4
Penrith Snapshot	6
Pre/Post Conference Touring	7
Team Building	10
After Dark	13
Venues	15
Accommodation	36
Contact	42

# Location & Getting Here

**Penrith is located 45 minutes from Sydney's Domestic and International airport and is easily accessible by major motorways and public transport network, which means that no matter where you're travelling from, your trip to Penrith will be hassle free.**

Opening in 2026, Western Sydney International (Nancy-Bird Walton) Airport will be 11 kilometres from the Penrith CBD and connected by rail. While conveniently close to Sydney, Penrith is still far enough away from the hustle and bustle to offer the best of both city and regional destinations, including world-class facilities and amenities and spectacular natural features like the Blue Mountains National Park and the Nepean River.

## From Sydney

Use the M4 Motorway and take either the Northern Road exit or the Mulgoa Road exit to get to Penrith; the Mamre Road exit to get to St Marys; or the Russell Street exit to get to Emu Plains.

## From the South

From the South Western Freeway/Hume Highway take the Penrith exit, follow the Route 9 signs along Northern Road to Penrith, or continue past the Northern Road exit and take the M7 Tollway (e-Toll only\*) to the M4.

## From the North

From the M1 Pacific Motorway, take the NorthConnex Tunnel\* (e-toll only) leading to the Hills M2 Motorway\* (e-toll only), followed by the M7 Motorway\* (e-toll only) and take the exit at the M4 Motorway to Penrith.

## From the West

From the M4 Motorway/Great Western Highway, take the Northern Road or Mulgoa Road exit for Penrith; the Mamre Road exit for St Marys; or the Russell Street exit for Emu Plains.

*\*Some routes require toll payment, if you do not have an electronic tag then it's best to purchase an Emu Pass designed for visitors and casual users of Sydney toll roads. Phone 13 18 65 or visit [emupass.com.au](http://emupass.com.au)*

## By public transport

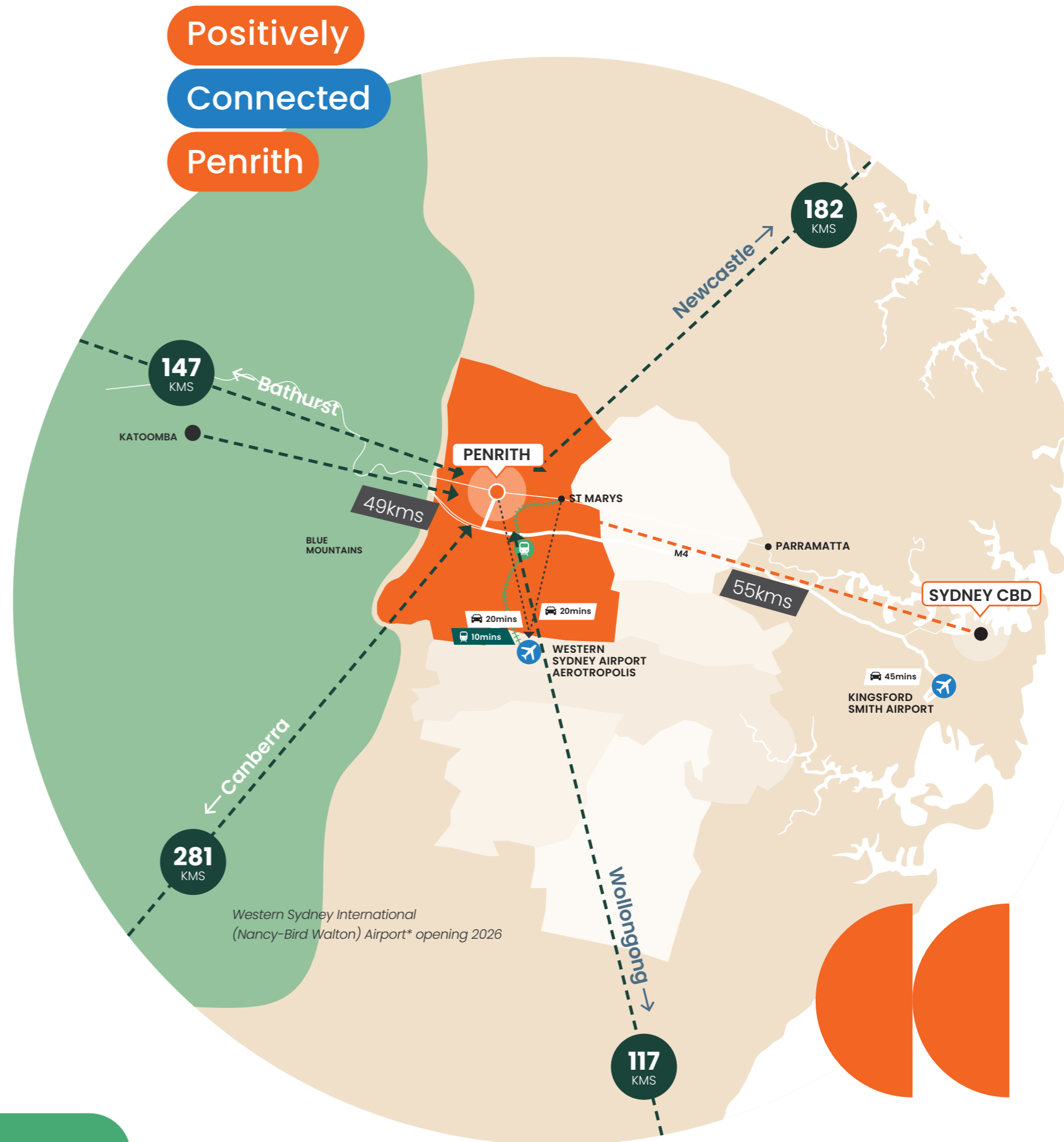
Penrith is on the Western and Blue Mountains line of the Sydney Trains network. Our local railway stations are St Marys, Werrington, Kingswood, Penrith and Emu Plains. Trains to the Blue Mountains via Penrith and Emu Plains depart from Central. Suburban trains depart regularly from Central and City stations. Daily NSW TrainLink services to and from Central NSW also stop at Penrith. If you are travelling to the airport, change at Central for the airport link trains.

*\*Contactless is a quick and easy alternative way to pay for your trip on public transport in Sydney and surrounds if you don't have an Opal card. For more information visit [transportnsw.info](http://transportnsw.info)*

Positively

Connected

Penrith



\*Easily accessed by international and domestic airports, major motorways and public transport

# Penrith Snapshot

## Central location



To Katoomba,  
Blue Mountains



45 mins to  
Sydney CBD

## Close to nature



Spectacular lakes  
and river

## Hospitality



Beds to stay  
overnight\*



Outstanding food  
& wine venues

## Connections



To Western Sydney  
International (Nancy-Bird  
Walton) Airport opening  
in 2026.



To Sydney Kingsford  
Smith Airport



Hectares of open  
space & national park



Olympic sporting  
venues

## Venues



Man-made white water  
course in the southern  
hemisphere



Jetpacking attraction  
in Sydney



Indoor skydiving  
facility in NSW

# Pre/Post Conference Touring

Whether you love nature, history or art, if you enjoy nature, arts and culture, or you're on the hunt for adrenaline-fuelled activities and foodie delights, Penrith always delivers.

Come ahead of time or extend your stay so you can explore Penrith - where there truly is something adventurous for everyone. Be prepared to be surprised.



## Zambi Wildlife Retreat

If you have ever wanted to feed a tiger, then the Zambi experience allows you to do just that! Zambi Wildlife Retreat is a wildlife park with a difference. Designed for animals that have retired from the circus, entertainment industry, zoo breeding programs and private ownership, they offer prearranged experiences for visitors to learn more about their animals and offer a unique hands-on option to meet (and feed) them.

## Penrith Regional Gallery

Penrith Regional Gallery - Home of the Lewers Bequest is one of Australia's most beautiful regional galleries. The Gallery presents a dynamic and interesting mix of exhibitions, workshops and other programs. Cafe at Lewers is set in the heritage gardens and is the perfect spot to enjoy a delicious meal. The cafe is open for breakfast, lunch, morning and afternoon tea.



## Heritage Walks

Want to know more about our history? Start with the Penrith and St Marys Heritage Walks! The mobile-friendly interactive maps will guide you to key historical points of interest while you uncover the fascinating facts about the people and places that helped shape our City.

### Sydney Helicopters

The longest running commercial helicopter service for over 30 years, Sydney Helicopters provides exhilarating corporate and private chartered helicopter flights from Penrith and beyond. Explore Western Sydney like never before with an unforgettable experience to brag about.



3

### Kayak, canoe or paddleboard

The Nepean River is an adventurer's paradise and the five-kilometre section between Penrith and the Nepean Gorge is perfect for kayaks, canoes and paddleboarding. The long, calm stretch of water offers adventurers the chance to be active while enjoying the most spectacular views of the rugged sandstone cliffs of the Blue Mountains, surrounding bushland and native wildlife. Hire your kayaks, canoes and boards from nearby Horizon Line and book in for personalised tours of the Nepean River and private lessons.



6

4



### Great River Walk

The beautiful Nepean River provides you with endless opportunities to be active in the great outdoors, but perhaps the most popular way to experience and enjoy the river is by foot. The Great River Walk is a seven-kilometre walking track which forms a loop connecting Penrith to Emu Plains and includes the Yandhai Nepean Crossing. Enjoy a leisurely stroll and stop along the way at one of the lookouts or sculptural seating areas to watch the boats, birds and other wildlife on the river. There are also several cafés along the way if you want to break for lunch.

5



### Jetpacking or Flyboarding

This is the chance to live out your dreams with jetpacking or flyboarding. With jetpacking fly above the water like James Bond or use the flyboard and hover above like Marty McFly from Back to the Future 2. Either option is guaranteed to get the adrenaline pumping with all the on-water action.

8



### East Bank

The lively East Bank dining precinct at the Nepean River is one of the best spots in Penrith to eat and drink and is undoubtedly the best place to explore and enjoy different cuisine.

There are plenty of dining options down by the river with cuisine from around the world.

A new restaurant hub and destination in its own right. Our advice: Come thirsty, come hungry and savour every delicious mouthful!

7



### Nepean Belle Paddlewheeler

Cruise along the Nepean River on this romantic old world style paddlewheeler. Experience the joy of the Nepean Gorge and see why the Nepean Belle is such an icon after spending 40 years cruising the Nepean River. The boat's design was based on the Mississippi sternwheelers and was the last hull project built by De Havilland Marine at Homebush Bay. The location, good food, atmosphere and romantic old-world charm leads to a truly unique experience.

9



### Riley's Mountain Lookout

If you're after breathtaking views of the Nepean Gorge in the Blue Mountains National Park, take a short scenic drive south along Mulgoa Road from Penrith to reach the historic and picturesque Mulgoa Valley. Once there, take a short walk of only a few hundred metres from Fairlight Road to The Rock Lookout where you'll be greeted by sweeping views of the Nepean River. You can pose for photos on the iconic rock following in the footsteps of two centuries of visitors. A longer track of 2.5 kilometres takes keen bushwalkers through swampy heath and eucalyptus forest to Riley's Mountain where more views of the Nepean River and surrounds can be enjoyed.

10



### Mountain View Reserve

Mountain View Reserve is one of Penrith's hidden gems. Take a stroll along the track to explore the bushlands, wildlife and fauna. Be sure to stop at the bird hide to observe and photograph the wildlife!

The reserve bushland and wetland is home to many species of wildlife, some are rare and unique to the area. It includes a 1.8km pram friendly, easy grade track which you can walk or ride in around 30 to 40 minutes, depending on how long you pause to take in the magnificent view.

Take the time to explore this delightful pocket of nature, listen for the frogs and birds, and climb the hill to the viewing platform overlooking the Penrith Lakes and the Blue Mountains.

For more venue, dining and team building experiences see [visitpenrith.com.au](http://visitpenrith.com.au)



Positively

Adventurous

Penrith

# Team Building Activities & Experiences

In Penrith there are lots of great options for team building activities and experiences that will get everyone energised. So, when it's time to leave the four walls of the conference behind to forge friendships, create memories and unwind with colleagues, we've got you covered.

## Adrenaline charged



### GO-KARTING & PAINTBALL

If you are a competitive group, then go-karting and paintball are the perfect team-building activities allowing you to challenge each other to achieve your best. Put the pedal to the metal as you race around the outdoor pro-circuit go-kart track or form teams to defeat the enemy in the state-of-the-art paintball facility at Luddenham Raceway where teams work together to bring out the best in each other. And, at the end of the day, everyone wins!



### INDOOR SKYDIVING

There's no better way to bond as a team than to experience the thrill and excitement of indoor skydiving. Colleagues can cheer each other on from the viewing deck as each person takes a turn in the flight chamber. With congratulations, high fives and loud applause after each flight, it's an exhilarating experience that will bring a team closer together and leave them with memories to last a lifetime.



### LUDDENHAM MOTORSPORT PARK

Your car, our track! The Motorsport track at Luddenham Raceway features a purpose-built circuit that is a thrilling and technical track with challenging elevation changes and plenty of technical corners to push you and your car to the limits, develop your confidence and enhance your driving ability skills, all in a fun safe and controlled environment.



### THROW AXE

There's something primal about throwing axes (when it's done in a safe environment aiming for a wooden target). It's a simple and effective method for releasing stress while also having fun with your colleagues. Here, teams compete against each other in a round-robin style tournament to determine who will be crowned the champion axe thrower. Only one person can wear the crown, but everyone leaves a winner as they walk away with new skills and a smile on their face.



### WHITEWATER RAFTING

At Penrith Whitewater Stadium, teams can follow in the oar strokes of great Olympians like Penrith's own Jessica Fox with a rafting adventure around the 320-metre course – purpose built for the Sydney 2000 Olympic Games. Groups of up to eight people work together to get through the rapids and complete the course. There are no Olympic medals up for grabs, but a great time is guaranteed.

## Learn & unwind



### CREATIVE WORKSHOPS

Unleash your creative side with an interactive art class at Penrith Regional Gallery. Be inspired by the picturesque heritage gardens and the history of the building whilst using your artistic skills to create your masterpiece. If you're after something more informal but equally rewarding, Pinot & Picasso or Paint & Sip Studios are great experiences. Learn the basic (and some more advanced) techniques of painting on canvas, while enjoying great food and, of course, wine. The Creative Fringe can also facilitate a range of hands-on workshops to suit your groups needs.



### DRAMA & SPEECH WORKSHOPS

Discover a talent for public speaking, enhance your presentation skills and develop the confidence to speak in front of large groups of people with a drama and speech workshop at the Joan Sutherland Performing Arts Centre. This world-class venue is where Australia's best and internationally renowned performers thrill audiences of all ages with theatre, dance, music and comedy shows. Now you can walk in their footsteps, step on stage and participate in a workshop, learning skills that can make a real difference to your career and your confidence.



### ESCAPE ROOMS

Can you imagine locking your team in a room and asking them to work together to solve puzzles and crack the clues so they can escape? Well, that's exactly what's in store at Narrow Escape Room. and SCRAM Escape Rooms Experience the ultimate in problem solving team building activities, where individuals learn to trust, colleagues become friends and teams are forged through a unique shared experience.

## NATURE & OUTDOORS



### FOOTGOLF

What do you get when two sports combine to create a whole new sport? A whole lot of fun for everyone! FootGolf combines the best parts of golf, with the most fun parts of soccer. The game is played the same way as golf except players use a football instead of a golf ball and the ball is kicked into the holes rather than struck with a club. It's the perfect team building activity to get groups moving, thinking and working together. Grab your teammates and enjoy a round or two (or three) of FootGolf in Penrith.



### ZAMBI WILDLIFE RETREAT

Zambi Wildlife Retreat is a wildlife park with a difference, designed for animals that have retired from the circus, entertainment industry, zoo breeding programs and private ownership. While the focus is on exotic animals (mainly big cats) the retreat also offers shelter to domestic, farm and native wildlife needing a forever home. You can book an experience at Zambi Wildlife Retreat for your team (up to six people). It really is a great way to build bonds with your colleagues as well as with the animals you meet – and get to feed!

# After Dark

## And at the end of the day...

When the sun goes down Penrith comes alive with great music venues, cool bars, quirky cafés and unique restaurants which draw in locals and visitors for a great night out.

From bars on rooftops or that float on the river, to dumpling heaven and a meal with a side of arcade games, your group is sure to find a place to unwind and create memories in Penrith.

### The Riverboat Bar

Float down the beautiful Nepean River aboard The Riverboat Bar! With capacity to entertain 120 people, the boat includes three bars and offers grazing platters. It also features three small dance areas with stunning river views. Catching a water taxi to The Riverboat Bar is all part of this fun on-water experience.

1



2

### Theo's Rooftop Bar

Watch the sun go down over the Blue Mountains as you sip drinks, poolside, at Theo's, Astina Suites' rooftop bar. You can enjoy open air dining at this Penrith haven. Bookings are needed for groups and a smart casual dress code applies.

3



### The Log Cabin

Located in the heart of Penrith, The Log Cabin is a historic hotel with a vivid past, boasting spectacular views of the Nepean River.

4

### Rusty Penny Brewing

This small-batch brewing facility packs a mighty punch offering visitors an immersive brewery experience. With plenty of seating and a large-open plan layout, enjoy a drink straight from the tap with an array of hearty meats from the smokehouse and classic Aussie meals.

### The Flower Shop

Experience an ode to the luxurious underground scenery from over a century ago as you step into the dimly lit passageway leading to The Flower Shop. Indulge in European inspired tapas and delicious snacks with a delicate wine and cocktail pairing menu. It's a perfect place to escape!



7

### Ironbark Terrace

Part of St Marys Rugby League Club, Ironbark Terrace is a popular outdoor dining space where you can enjoy craft beers, chilled wines or signature cocktails. There's also an extensive menu of good, hearty food and the chance to take in some live music.

8

9



### The Joan

The Joan Sutherland Performing Arts Centre, or The Joan as it is affectionately known, offers an eclectic range of music, dance, comedy and theatre performances all year round. Book your group into a show as a post conference treat.

6

### Emu Hall

With indoor and outdoor dining options, this riverside restaurant is open late. Sit back under twinkly lights as you enjoy delicious food and choose from an extensive drinks list. An historic gem, Emu Hall has been lovingly restored into a venue that is truly something special.

10

### Love live tunes?

As the sun sets across Penrith, there's plenty of bars, clubs and pubs that come alive with music played by great local singers and musicians and some of Australia's favourite bands. If you like your music wrapped in a pub, head to the Tattersalls Hotel, O'Donoghues or the Jamison Hotel or, if music by the river is more your thing, try The Log Cabin or Emu Hall.

For the convenience of a club, check out Penrith Panthers, St Marys Band Club and St Marys Leagues Club.

5

### Mr Watkins

Mr Watkins is a café by day and an old-fashioned (but seriously cool) bar and restaurant by night. The delicious food at Mr Watkins is paired with an impressive range of craft beers, cocktails and a seriously well curated wine list.



# Event & Conference Venues

Two Olympic sporting venues, several sporting stadiums, a performing arts centre, function centres and 4 and 5-star hotels equipped with state-of-the-art conference facilities – no matter how big or small your event, there's a space in Penrith to suit your needs.

We know finding the right space is just the start of organising your next business event, whether it's in the natural surrounds of Penrith or in the vibrant heart of our city centre. It's our nature to connect you with the people you need to make your event happen, and help you come up with fresh ideas to take it to the next level.

#### Key



Restaurant or catering onsite



Bar onsite



Accessible



Complimentary parking



Accommodation onsite



Outdoor event space



Wifi available



# Astina Suites



The brand new Astina Suites Penrith offers 58 boutique, one, two and three bedroom apartments and the first rooftop bar in the region. There is also a rooftop function room, techno gym and Recovery Studio complete with float tank, spa, sauna, steam room and ice baths.

## CONTACT DETAILS

**Street Address:** 21-25 Woodriff Street, Penrith, NSW 2750  
**Telephone:** 02 4731 1777  
**Email:** events@astina.com.au  
**Property Website:** astinasuites.com.au

## FACILITIES



## TYPES OF EVENTS AND FUNCTIONS

- Awards and corporate celebrations
- Cocktail parties
- Conferences and Annual General Meetings
- Dinners
- Exhibitions/expos
- Information days
- Meetings, seminars and presentations
- Product display
- Promotions/product launches
- Short courses
- Training programs
- Trade shows
- Workshops

## ROOM/SPACE CAPACITY

Room/Space	Capacity	
Gweneth Elizabeth	120-200	
Theo's Rooftop Bar	Whole space	120
	Poolside	25
	Awning	60
	Peacock Room	14

# Castlereagh Conference Centre



Just four kilometres from the heart of Penrith but a world away in time and tranquillity, Castlereagh Conference Centre is perfect for your next business event or retreat. It provides great accommodation for 20 to 48 people and associated conference facilities for up to 80. The Centre is on the edge of the Penrith Lakes Scheme, adjacent to the Sydney International Regatta Centre and includes key elements of the Upper Castlereagh Heritage Precinct with continuous historical links back to 1817.

## CONTACT DETAILS

**Street Address:** 297-305 Old Castlereagh Road, Castlereagh NSW 2749  
**Telephone:** 02 47 290 012  
**Email:** bookings@castlereagh.org.au  
**Property Website:** www.castlereagh.org.au

## FACILITIES



## TYPES OF EVENTS AND FUNCTIONS

- Day meetings, seminars and presentations
- Information days
- Private functions
- Residential conferences
- Retreats
- Short courses
- Small workshops
- Staff training
- Training programs
- Weddings
- Workshops

## ROOM/SPACE CAPACITY

Room/Space	Capacity
Gloster Udy Hall	80 theatre style
Historic Dining Room	60
Historic Chapel	80

# Edmund Rice Retreat & Conference Centre – Winbourne



Winbourne is set in the picturesque Mulgoa Valley. Dating back to the 1820s, it is an historic oasis in a rural setting yet conveniently close to the city. Set among beautiful open gardens and heritage buildings, Winbourne makes a great backdrop for your event.

Original buildings are blended with modern facilities and accommodation as well as a variety of multi-purpose spaces, from large conference rooms and small meeting rooms to versatile break out areas that can accommodate large and smaller groups. Winbourne can meet your audio-visual needs and provide on-site catering and also offers plenty of space for team building activities.

## CONTACT DETAILS

**Street Address:** 1315 Mulgoa Road, Mulgoa NSW 2745  
**Telephone:** 02 4773 5555  
**Email:** info@winbourne.org  
**Property Website:** winbourne.org

## FACILITIES



## TYPES OF EVENTS AND FUNCTIONS

- Bootcamps
- Concepts
- Conferences and Annual General Meetings
- Courses
- Meetings/seminars and presentations
- Exhibition/Expos
- Forums
- Private functions
- Retreats
- Team building
- Technical/field/study trips
- Training programs
- Workshops

ROOM/SPACE	CAPACITY
Mary Mackillop	10-15
Winbourne	10-15
Kelly Room	30-40
Mary Elliot & Mary Rice Rooms	30
Ironbark Room	80-100
Stables	80-100
Blessed Edmund Rice Room	100-150

# The Gateway



The Gateway Function Centre is part of the popular St Marys Band Club with easy access to the M4 and a short walk to a train station and shops. It is perfect for large functions, events, trade shows and presentation dinners with a seated dining capacity of up to 500 guests.

The auditorium includes state-of-the-art sound and lighting equipment, projector screens, an adjustable stage, dancefloor and two fully contained bars. The facility also offers free on-site parking, vehicle access to a rear loading dock and a service lift.

## CONTACT DETAILS

**Street Address:** 411 Great Western Hwy, St Marys NSW 2760  
**Telephone:** 02 9623 1211  
**Email:** info@stmarysbandclub.com.au  
**Property Website:** stmarysbandclub.com.au/functions-events

## FACILITIES



## TYPES OF EVENTS AND FUNCTIONS

- Conferences
- Corporate celebrations
- Dinner and Award nights
- Forums
- Information days
- Meetings
- Promotions/Product launches
- Seminars
- Short courses
- Workshops

ROOM/SPACE	CAPACITY
<b>Gateway Room 2</b>	Banquet 50-60 Cocktail 130 Classroom 50 Theatre 100 U-Shape 70
<b>Gateway Function Centre</b>	Banquet 70-150 Cocktail 220 Classroom 120 Theatre 160 U-Shape 100
<b>Auditorium</b>	Banquet 200-500 Cocktail 700 Classroom 400 Theatre 700 U-Shape N/A

# The Joan Sutherland Performing Arts Centre



The Joan Sutherland Performing Arts Centre – The Joan – is the heart of arts and culture in Penrith. It hosts everything from world class performances to community dance concerts, brand new theatrical works, contemporary and classical music, local events and plenty in between. Close to Westfield Penrith and a short walk from Penrith Train Station and bus interchange, The Joan can cater for a range of events and functions and offers state-of-the-art sound and lighting. It includes a concert hall, drama theatre, performance studio, an atrium foyer, bar with large lounge-style foyer, onsite café with catering, 18 tuition studios and 6 meeting rooms.

## CONTACT DETAILS

**Street Address:** 597 High Street, Penrith 2750  
**Telephone:** 02 4723 7600  
**Email:** venues@penrith.city  
**Property Website:** thejoan.com.au

## FACILITIES



## TYPES OF EVENTS AND FUNCTIONS

- Awards presentations
- Board meetings
- Creative Development
- Conferences
- Corporate events
- Information days
- Meetings, seminars and presentations
- Performances/rehearsals
- Promotions/product launches
- Seminars
- Short courses
- Staff training
- Training programs
- Workshops

ROOM/SPACE	CAPACITY
Allan Mullins Studio	80
Atrium Foyer	Exhibitions only
Ensemble Rooms	15
Malcolm Borland Foyer	250 standing 100 seated
Meeting Room	14
Orchestral Rooms	70
Q Theatre	378
Richard Bonyngue Concert Hall	550
Studio Rooms	18

# The Log Cabin



Set on the banks of the Nepean River, The Log Cabin offers stunning views across the river and Blue Mountains. It can cater for small groups and large events for up to 330 people. The first floor Bridge View room seats 200 and includes a private bar, dance floor, outdoor balcony and state-of-the-art audio-visual equipment. Sinclair's dining room provides a smaller space (seats 14) for breakout sessions or private dining. A wide range of tailored food and beverage packages are available.

## CONTACT DETAILS

**Street Address:** 20 Memorial Ave, Penrith NSW 2750  
**Telephone:** 02 4711 3324  
**Email:** info@thelogcabin.com.au  
**Property Website:** thelogcabin.com.au

## FACILITIES



## TYPES OF EVENTS AND FUNCTIONS

- Private dining
- Awards and corporate celebrations
- Cocktails parties
- Conferences and Annual General Meetings
- Dinners
- Information Days
- Meetings, seminars and presentations
- Promotions/product launches
- Short courses
- Training programs
- Workshops

ROOM/SPACE	CAPACITY
Bridgeview Room	Standing 330 Seated 200 Casual Seating 196
Sinclair's	14

# Panthers Penrith Leagues Club



The Event Centre at Penrith Panthers offers a portfolio of seven formal and informal function rooms boasting an 800-delegate purpose-built seminar and entertainment theatre with full audio-visual services in house. The function rooms are perfect for meetings, seminars, conferences, workshops, events and exhibitions including break-out areas, catering for groups as small as 8 or as large as 1500. The Centre also offers multipurpose indoor and outdoor precincts including the Evan Theatre and has a range of onsite activities for team building or entertainment. Onsite accommodation offers both 4 and 5 star hotels, over 2800 complimentary car parking spaces and close proximity to public transport.

## TYPES OF EVENTS AND FUNCTIONS

- Association events
- Awards and corporate celebrations
- Cocktail parties
- Conferences and Annual General- Meetings
- Dinners and presentation nights
- Exhibitions/Expos
- Information days
- Meetings, seminars and training
- Product display
- Promotions and product launches
- Trade shows
- Workshops

## CONTACT DETAILS

**Street Address:** Mulgoa Road, Penrith NSW 2750  
**Telephone:** 02 4720 5511  
**Email:** [eventscentre@panthers.com.au](mailto:eventscentre@panthers.com.au)  
**Property Website:** [penrith.panthers.com.au](http://penrith.panthers.com.au)

## FACILITIES



VENUE	METRES <sup>2</sup>	THEATRE	CLASSROOM	CABARET	BANQUET	U-SHAPE	U-SHAPE	BOARDROOM	EXPO
<b>EVAN Theatre</b>	Tiered	900	-	430	430	-	850	-	-
<b>Ron Mulock AO Room</b>	392m <sup>2</sup>	400	160	200	280	-	350	-	30 booths (3x3m)
<b>Ron Mulock AO Room 1</b>	200m <sup>2</sup>	200	80	88	130	40	180	40	
<b>Ron Mulock AO Room</b>	192m <sup>2</sup>	200	80	96	150	50	180	40	-
<b>Pre Function</b>	374m <sup>2</sup>	-	-	-	-	-	350	-	12 booths (3x3m)
<b>Chairman's Lounge</b>	392m <sup>2</sup>	400	160	220	280	40	350	40	30 booths (3x3m)
<b>Jamison Room</b>	282m <sup>2</sup>	200	120	120	170	50	220	50	13 booths (3x3m)
<b>Woodriff Room</b>	221m <sup>2</sup>	180	90	88	120	50	150	50	-
<b>Hunter Room</b>	173m <sup>2</sup>	130	60	48	80	30	100	30	-
<b>John Farragher Boardroom</b>	78m <sup>2</sup>	-	-	-	16	-	-	16	-

# Penrith Regional Gallery – Home of the Lewers Bequest



The Penrith Regional Gallery – Home of the Lewers Bequest is perfect for functions and business events for up to 80 people. With unique artistic and architectural heritage, gardens and collections it forms an educational and recreational resource that is recognised nationally and internationally. The Gallery is set on the western bank of the Nepean River at the foot of the Blue Mountains and was once home to celebrated modernist painter Margo Lewers and sculptor Gerald Lewers. It offers a range of dynamic spaces that open onto a grassed courtyard with the option for catering services. The venue is perfect for dinners, conferences, forums, meetings, launches and training days.

## CONTACT DETAILS

Street Address: 86 River Road, Emu Plains, NSW 2750  
 Telephone: 02 4735 1100  
 Email: gallery@penrith.city  
 Property Website: penrithregionalgallery.com.au

## FACILITIES



## TYPES OF EVENTS AND FUNCTIONS

- Award dinners
- Conferences
- Corporate events
- Forums
- Information days
- Meetings, seminars and presentations
- Promotions/launches
- Short courses
- Training days
- Workshops

## ROOM/SPACE CAPACITY

ROOM/SPACE	CAPACITY
<b>Ancher House Galley</b>	40
<b>Cafe</b>	110
<b>Outdoor Garden</b>	
<b>Studio 1</b>	Theatre style up to 80 Classroom style up to 40
<b>Studio 2</b>	Theatre style up to 30 Classroom style up to 20

# Penrith RSL



Penrith RSL is the perfect venue for business events and is conveniently located in the heart of Penrith. The facility offers a range of contemporary function rooms that cater for small events or groups of up to 200 people. Whether you are looking to hold a conference, seminar, training day, forum or corporate dinner, the dedicated team at Penrith RSL can help you lift your event above the ordinary. In addition, function guests can enjoy a range of club facilities prior to or after your event.

## CONTACT DETAILS

Street Address: 8 Tindale Street, Penrith NSW 2750  
 Telephone: 02 4728 5200  
 Email: functions@penrithrsl.com.au  
 Property Website: penrithrsl.com.au

## FACILITIES



## TYPES OF EVENTS AND FUNCTIONS

- Awards nights and corporate celebrations
- Conferences
- Exhibitions
- Meetings
- Promotions/product launches
- Seminars
- Short courses
- Training days
- Workshops

## ROOM/SPACE CAPACITY

ROOM/SPACE	CAPACITY
<b>Castlereagh</b>	40 pax
<b>Macquarie</b>	80 pax
<b>Hornseywood</b>	150 pax
<b>Board</b>	15 pax
<b>Meeting Room</b>	10 pax
<b>Myrtle Room</b>	20 pax

# Quest Penrith



Whether you're meeting for hours, days or weeks, Quest Penrith's conference facilities provide you with quality, choice, flexibility and convenience. Quest Penrith offers varied and professional catering options, high speed internet and state-of-the-art audio-visual equipment.

This purpose-built property combines conferencing and accommodation in one place and includes dedicated on-site reception and check-in. Quest is conveniently located just 80 metres from Penrith train station and 100 metres from the bus exchange.

## CONTACT DETAILS

Street Address: 83 Lord Sheffield CCT,  
Penrith, NSW 2750  
Telephone: 02 9136 1100  
Email: [questpenrith@questapartments.com.au](mailto:questpenrith@questapartments.com.au)  
Property Website: [www.questapartments.com.au](http://www.questapartments.com.au)

## FACILITIES



## TYPES OF EVENTS AND FUNCTIONS

- Conferences
- Meetings, seminars and presentations
- Product launches
- Short courses
- Small workshops
- Staff training

Our spacious conference room can be configured to various table and seating layouts.

ROOM/SPACE	CAPACITY
Theatre	70 pax
U-Shape	30 pax
Classroom or Cabaret	30 pax
Boardroom	35 pax

# St Marys Rugby League Club



Saints Event Centre is part of the St Marys Rugby League Club complex, offering six rooms, with over 500m2 of flexible, stylish, and contemporary event space, and state-of-the-art audio-visual technology.

Custom-built for multi-day conferencing and gala events, Saints Event Centre provides full-service event solutions with premium facilities such as pre-function areas, multiple restaurants, lounges, sports bar, one of the best outdoor terraces in Sydney, four-star globally branded accommodation and free on-site parking for delegates and guests. In addition, the Club also offers the Boronia Showroom, "The Deck", St Marys Leagues Stadium and Corporate Area, and two meeting rooms at the Holiday Inn Sydney St Marys next door.

## CONTACT DETAILS

Street Address: Cnr Forrester & Boronia Roads,  
St Marys, NSW 2760  
Telephone: 02 9677 7703  
Email: [events@saintsrl.com.au](mailto:events@saintsrl.com.au)  
Property Website: [stmarysleagues.com.au](http://stmarysleagues.com.au)

## FACILITIES



## TYPES OF EVENTS AND FUNCTIONS

- Awards nights/gala dinners
- Bootcamps
- Conferences
- Exhibitions
- Forums
- Information days
- Meetings, seminars and presentations
- Promotions/product launches
- Short courses
- Team building
- Trade Shows
- Training programs
- Workshops

ROOM/SPACE	CAPACITY
Blaxland Boardroom	14
Boronia Showroom	80-350 seated 150-500 cocktails
Ironbark Deck	120
Saints Event Centre	40-120
St Marys Leagues Stadium	Stadium 700 Stadium Corporate Area 150
Wentworth Meeting Room	20

# Sydney International Regatta Centre



The Sydney International Regatta Centre is a purpose-built facility for rowing, sprint canoeing and kayaking and won international acclaim for hosting these sports at the Sydney 2000 Olympic Games. The venue is acknowledged as one of the best regatta courses in the world.

Located in Penrith, the venue is ideally positioned to host a range of events including festivals, concerts, community events, corporate meetings, private functions and business events. Open seven days a week (subject to event bookings) the venue now stages over 400 events each year and attracts half a million visitors annually.

## CONTACT DETAILS

Street Address: Gate A, Old Castlereagh Road, Penrith NSW 2750  
 Telephone: 02 4730 0000  
 Email: [regatta@sport.nsw.gov.au](mailto:regatta@sport.nsw.gov.au)  
 Property Website: [regattacentre.nsw.gov.au](http://regattacentre.nsw.gov.au)

## FACILITIES



## TYPES OF EVENTS AND FUNCTIONS

- Concerts
- Conferences/seminars & exhibitions
- Festivals
- Regattas
- Sporting events
- Team building

ROOM/SPACE	CAPACITY
	Theatre style
<b>Seminar Room</b>	25
<b>Meeting Room</b>	25
<b>Olympic Room</b>	30
<b>Boatshed Function Room</b>	50

# Twin Creeks Golf & Country Club



From professional seminars, product launches and staff development days to cocktail receptions and VIP Dinners, Twin Creeks Golf & Country Club can provide the ideal function space for a variety of meeting and conferencing requirements.

Perfectly suited to meeting sizes of 10 people through to larger conference groups of up to 220, our three flexible rooms incorporate an abundance of natural light, functional breakout areas and outdoor terrace, all of which are fully accessible.

## CONTACT DETAILS

Street Address: 2-8 Twin Creeks Drive, Luddenham NSW  
 Telephone: 02 9670 8867  
 Email: [Corporate@twincreeks.com.au](mailto:Corporate@twincreeks.com.au)  
 Property Website: [twincreeksgolf.com.au](http://twincreeksgolf.com.au)

## FACILITIES



## TYPES OF EVENTS AND FUNCTIONS

- Cocktail receptions
- Conferences
- Meetings
- Product launches
- Seminars
- Team building
- VIP Dinners

ROOM/SPACE	CAPACITY
<b>Cosgrove 1 &amp; 2</b>	Theatre 180, U-Shape 48 Classroom 144, Boardroom 48 Cabaret 124, Banquet 162 Cocktail 220
<b>Cosgrove 1</b>	Theatre 84, U-Shape 24 Classroom 60, Boardroom 24 Cabaret 40, Banquet 50 Cocktail 90
<b>Cosgrove 2</b>	Theatre 96, U-Shape 30 Classroom 72, Boardroom 30 Cabaret 40, Banquet 50 Cocktail 100
<b>Marsden</b>	Theatre 40, U-Shape 25 Classroom 18, Boardroom 20 Cabaret 24, Banquet 32 Cocktail 50

# Western Sydney Conference Centre



Ideally located in the heart of Penrith, The Western Sydney Conference Centre (WSCC) is an innovative state-of-the-art venue that delivers limitless possibilities. The inspiring and versatile WSCC is designed to accommodate limitless imagination across all styles of events. A total floor space of 1,250sqm can be effortlessly transformed to greet 1,000 seated guests for engaging exhibitions, trade shows, seminars, workshops, gala dinners and more.

Seamlessly connected to the WSCC is Penrith's first international five-star hotel, the Pullman Sydney Penrith. The precinct features a range of restaurants, bars and cafes offering a variety of premium experiences from day to night.

Whether making a night of an evening event, conferencing over multiple days or extending an exhibition into a weekend retreat, this destination showcases a myriad of indulgent offerings that complete any event experience.

## TYPES OF EVENTS AND FUNCTIONS

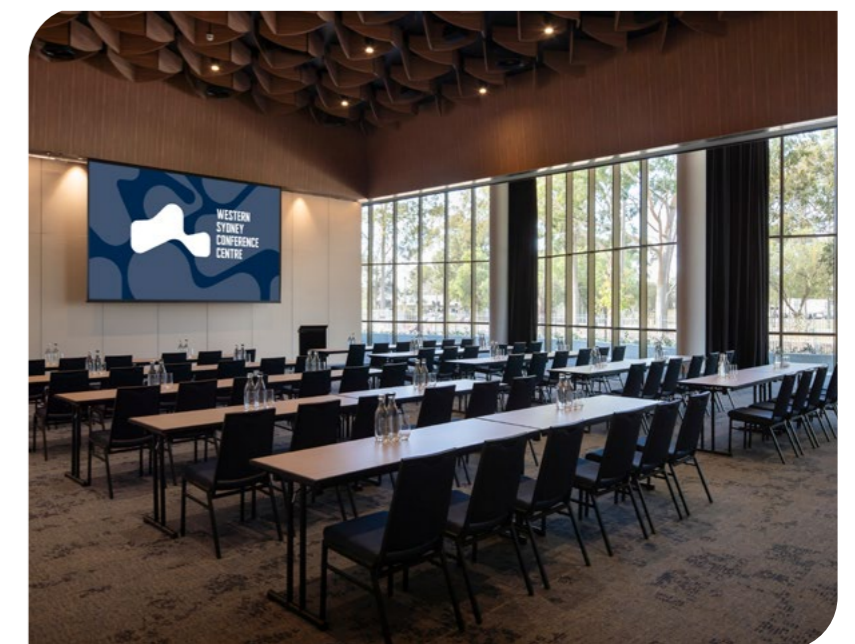
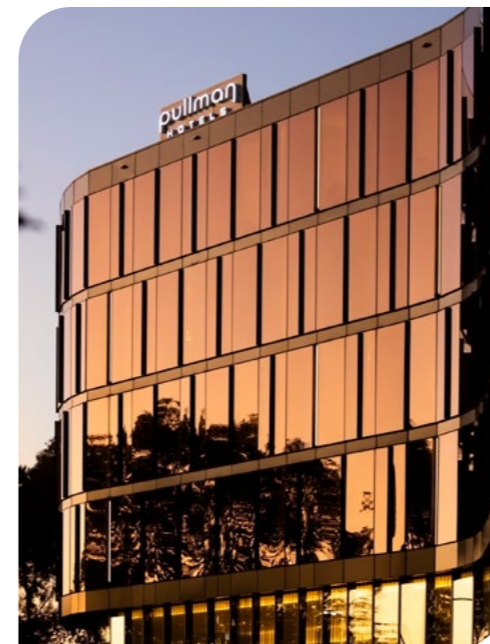
- Awards and corporate celebrations
- Cocktail Parties and Gala dinners
- Conferences and Annual General Meetings
- Dinners and presentation nights
- Exhibitions/Expos
- Information days
- Meetings, seminars and training
- Association events
- Product display
- Promotions and product launches
- Team building
- Workshops

VENUE	METRES <sup>2</sup>	THEATRE	CLASSROOM	COCKTAILS	BANQUET	EXHIBITION	BOARDROOM	U-SHAPE
<b>WSCC</b>	1250m <sup>2</sup>	1000	700	1000	1000	80	-	-
<b>WSCC ROOM (1)</b>	416m <sup>2</sup>	330	160	350	330	26	-	-
<b>WSCC ROOM (2)</b>	416m <sup>2</sup>	330	160	350	330	26	-	-
<b>WSCC ROOM (3)</b>	416m <sup>2</sup>	330	160	350	330	26	-	-
<b>WSCC ROOM (4)</b>	209m <sup>2</sup>	200	80	175	165	13	40	50
<b>WSCC ROOM (5)</b>	209m <sup>2</sup>	200	80	175	165	13	40	50

## CONTACT DETAILS

Street Address: 83 Mulgoa Road, Penrith NSW 2750  
 Telephone: +612 4725 6444  
 Property Website: [westernsydneyconferencecentre.com.au](http://westernsydneyconferencecentre.com.au)

## FACILITIES





# Western Sydney University



The Western Sydney University (WSU) Kingswood campus is conveniently located next to key public transport for the region.

With a range of function centres, conference rooms, lecture theatres, classrooms, meeting rooms and sporting facilities available, you'll find something to suit your requirements for your next private or corporate event.

WSU offers an extensive range of facilities across greater Western Sydney to cater from 10 to 1,000 delegates.

## CONTACT DETAILS

Street Address: Second Ave, Kingswood NSW 2747  
 Telephone: 02 9852 5092  
 Email: [venues@westernsydney.edu.au](mailto:venues@westernsydney.edu.au)  
 Property Website: [westernsydney.edu.au](http://westernsydney.edu.au)

## FACILITIES



## TYPES OF EVENTS AND FUNCTIONS

- Board meetings and corporate general meetings
- Charity/community events
- Company product launches and promotional events
- Conferences and public lectures
- Film/photography shoots
- Performing arts events - opera, dance, choir and plays
- School speech/presentations
- Staff retreats
- Training programs

## ROOM/SPACE

## CAPACITY

Playhouse Theatre (performance space with stage and tiered seating)	220
Building I, Room 1.04 (flat floor classroom style space)	50
Building K, Room 1.04 (tiered lecture theatre)	180
Building U, Room G.50 (tiered lecture theatre)	360
Building XA, Room G.03 (tiered lecture theatre)	219
Building P, Room G.34 (Meeting Room)	20
Building Z, Room G.20 (Meeting Room)	10
Building O, Room 1.20 (Multipurpose space)	200

# Zambi Wildlife Retreat



Zambi Wildlife Retreat is truly a feast for the senses, home to big cats, lions and tigers, along with primates, meerkats, exotic parrots and wolf dogs. Showcasing the beauty of the natural world, through the smells, sights and sounds of the animals, Zambi is both unique, and exclusive offering only private bookings and bespoke experiences for small corporate, conference and meeting requests.

## CONTACT DETAILS

Street Address: Penrith LGA  
 Address available on booking  
 Telephone: 0401 317 883  
 Property Website: [www.zambiwildlifefoundation.org](http://www.zambiwildlifefoundation.org)

## FACILITIES



## TYPES OF EVENTS AND FUNCTIONS

- Conference and general meetings
- Meetings and presentations
- Team building
- Workshops

## ROOM/SPACE

## CAPACITY

Golden Safari Tent 30 people

# Additional Event & Conference Venues

VENUE	CONTACT DETAILS	MAX. CAP	TYPE OF EVENTS & FUNCTIONS	FACILITIES
<b>Creative Fringe</b>	thecreativefringe.com.au 1300 722 896	30	Shared office space for business owners and commuters.	Private offices, desk hire, meeting rooms and training room.
<b>Dunheved Golf Club</b>	dunhevedgolfclub.com.au 02 9623 0239	160	Private functions, conferences, corporate events, seminars and meetings.	Licensed venue, on-site catering, outdoor gazebo, 1 function room and free on-site parking.
<b>Emu Sports Club</b>	02 4735 5300 emusports.club	180	Private functions, corporate events, conferences, seminars, meetings, workshops, short courses and training programs.	On-site catering, licensed venue, 3 appointed function rooms, chairs, tables and linen provided, audio-visual, outdoor gazebo and free on-site parking.
<b>Glenmore Heritage Valley Golf Club</b>	02 4733 1230 glenmoregolf.com.au	150	Corporate golf days, seminars, meetings, conferences and private functions.	2 function rooms, gazebo, licensed venue, on-site parking and on-site catering.
<b>Lakeside Restaurant</b>	02 4729 3222 lakesiderestaurant.com.au	150	Workshops, seminars, meetings, corporate events, private functions, award and gala dinners.	PA system, free on-site parking, on-site catering and licensed venue, tables, chairs and a projector.
<b>Littomore Suites Kingswood</b>	02 4712 8188 kingswood@littomoresuites.com.au	40	Conferences, meetings, seminars and workshops	Onsite catering, accessible access, complimentary parking and Wi-Fi available.
<b>Nepean Rowing Club</b>	02 4731 2255 nepeanrowingclub.com.au	200	Small corporate events, private functions, meetings and workshops.	3 function rooms, on-site catering, licensed venue, free on-site parking, chair and tables and basic AV.
<b>Nepean Shores</b>	02 4063 0801 glhp.com.au/parks/nepean-shores	150	Corporate events, business events, meetings, small conferences and private functions.	2 function rooms, whiteboard, screen, lapel and standard microphones, lectern, overnight accommodation onsite, free on-site parking, licenced catering and basic AV.
<b>O'Donoghue's</b>	02 4735 5509 odonoghues.com.au	100	Business events, corporate events and private functions.	Function room, on-site catering, licensed venue, stationery, whiteboard, data projector, free on-site parking and lift.
<b>Penrith Paceway</b>	02 4721 2375 clubpacewaypenrith.com	300	Conferences, workshops, meetings, sporting events, shows, seminars & harness racing.	Showground arena, 2 function rooms, lift and accessible facilities, free on-site carparking, on-site catering, licensed venue and basic AV.
<b>Penrith Gaels Club</b>	02 4722 8180 penrithgaels.com.au	150	Corporate events and private functions.	On-site catering, licensed venue, free on-site parking, 1 function room and tables and chairs.
<b>Penrith Golf Club</b>	02 4736 1633 penrithgolfclub.com.au	110	Small conferences, corporate events, meetings, seminars and private functions.	On-site catering, licensed venue, free on-site parking, 1 function room, PA and tables and chairs.

VENUE	CONTACT DETAILS	MAX. CAP	TYPE OF EVENTS & FUNCTIONS	FACILITIES
<b>St Marys Diggers</b>	02 9623 6555 stmarysrsl.com.au	200	Private functions, corporate events, meetings, conferences, seminars, product launches, exhibitions and gala dinners.	Audio visual, licensed venue, on-site catering and free on-site parking.
<b>The Henry Sports Club</b>	02 9623 2119 henrysportsclub.com.au	150	Meetings, private functions and gala dinners.	On-site catering, licensed venue and free on-site parking.
<b>The Red Cow</b>	02 4721 5666 redcow.com.au	200	Private functions and corporate events	Integrated sound system, plasma TVs, private function room, free room hire, on-site catering, licensed venue and lift.
<b>The Select Inn</b>	02 4709 8006 theselectinnpenrith.com.au	50	Meetings, seminars and presentations.	Standard conferencing equipment, on site accommodation, and on-site catering, free on-site parking and licensed venue.
<b>Wallacia Hotel</b>	02 4773 8888 wallaciahotel.com.au	250	Conferences, workshops, meetings, corporate events and private functions.	Free on-site parking, on-site accommodation, private function room, on-site catering and licensed venue.
<b>WOTSO Penrith</b>	1800 496 876 wotso.com/locations/penrith/	80	Shared office space for business owners and commuters.	Desk hire, meeting room and event space.

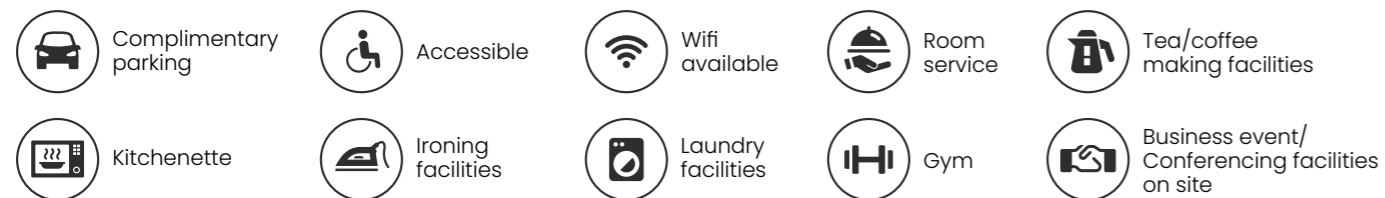


# Accommodation

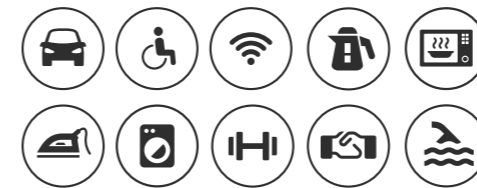
Penrith connects you to choice, offering a variety of accommodation options including hotels, motels, self-contained apartments, caravan parks and cabins. Whatever style of business event you're having, we're positive there's an accommodation option to suit your needs.



## Key



## Pullman Sydney Penrith



### Accommodation Snapshot



The newly built Pullman Sydney Penrith is the city's first international five-star hotel, conveniently connected to the Western Sydney Conference Centre and adjacent to Panthers Penrith World of Entertainment. The hotel presents 153 sophisticated guest rooms and suites along with some of the region's best dining and bars. Prepare to experience a fresh combination of lifestyle and design for business and leisure guests.

### Room Types

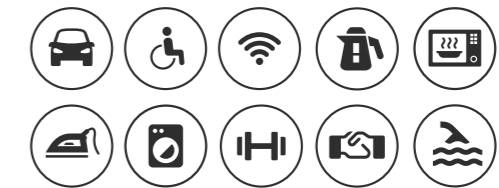
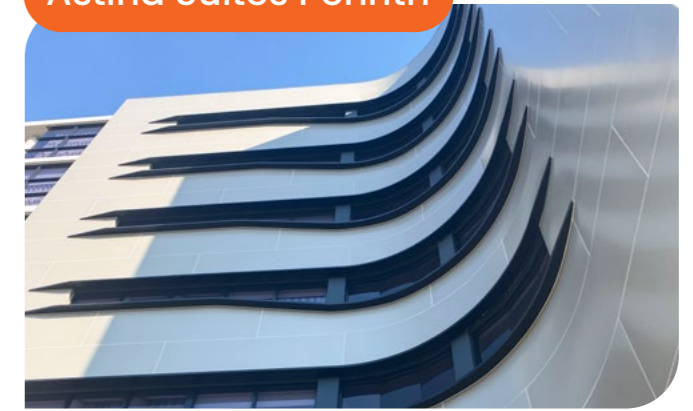
- Deluxe room
- Junior suites
- Superior room
- Accessible superior room



81 Mulgoa Road,  
Penrith NSW 2750  
02 4725 6000  
reservations@pullmanpenrith.com.au  
all.accor.com



## Astina Suites Penrith



### Accommodation Snapshot



Astina Suites offers luxury accommodation in the heart of Penrith. With 58 boutique one, two and three bedroom apartments, your group can be put up in style. Astina Suites also includes the region's first roof top bar, complemented by a pool and function room, a techno gym and the Recovery Studio, complete with float tank, spa, sauna, steam room and ice baths.

### Room Types

- Central Apartments: 1 bedroom apartments, 2 bedroom apartments, 3 bedroom apartments
- Parkside Apartments: 2 bedroom apartments



21-25 Woodriff Street,  
Penrith NSW 2750  
02 9136 1100  
reservations@astina.com.au  
astinasuites.com.au



## Holiday Inn Sydney St Marys



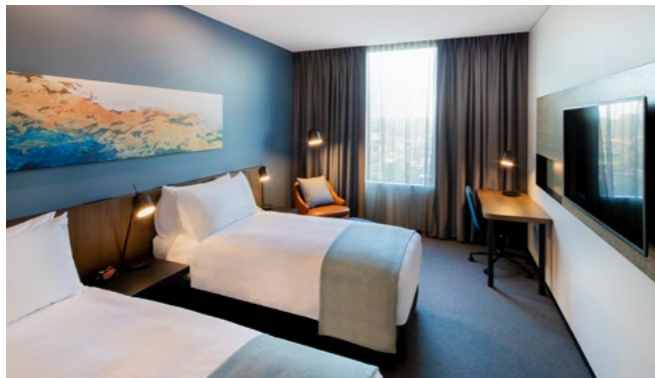
### Accommodation Snapshot



The Holiday Inn St Marys is perfect for business trips or a vacation. Conveniently located next to St Marys Leagues Club, guests can enjoy the club's four restaurants, five bars, lounge areas, outdoor terrace, function rooms and free entertainment. The rooms are beautifully decorated, spacious and comfortable and offer fast and free wifi, high-definition smart TVs and multiple charging USB ports.

### Room Types

- Twin Rooms
- King Rooms
- Suites
- Connecting room



Corner Forrester & Boronia Roads,  
St Marys NSW 2760  
02 9208 5678  
smile@histmarys.com.au  
holidayinn.com/sydneystmarys



## Littomore Suites Kingswood



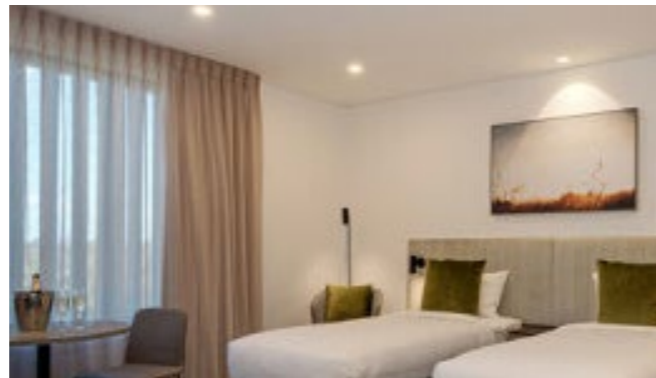
### Accommodation Snapshot



Perched perfectly between Nepean Hospital and Western Sydney University, Littomore Kingswood offers convenience for guests without neglecting that getaway feeling. Various apartment sizes and room standards will suit medical professionals, patients, families, and students with space and comfort to make you feel it's your home away from home.

### Room Types

- Studio apartment
- Executive studio apartment
- One & two bedroom apartments
- One bedroom accessible apartment



10 Hargrave St,  
Kingswood NSW 2747  
02 4712 8188  
kingswood@littomoresuites.com.au  
littomoresuites.com.au



## Mercure Penrith



### Accommodation Snapshot



The Mercure Penrith Hotel is contemporary accommodation located adjacent to Panthers Penrith World of Entertainment. Designed with the perfect urban oasis in mind, the Mercure offers thoughtful in-room comforts such as deluxe bedding, Wi-Fi Internet and flatscreen televisions. Enjoy a workout in the fitness centre and then reward yourself with a dip in the outdoor pool. Additional amenities include a guest lounge and BBQ areas for unwinding with colleagues.

### Room Types

- Standard room
- Superior room
- Superior king room
- Deluxe king room
- Superior family room
- Deluxe family room



Panther Place,  
Penrith NSW 2750  
02 4721 7700  
H9877@accor.com  
www.mercurepenrith.com.au



## Quality Inn



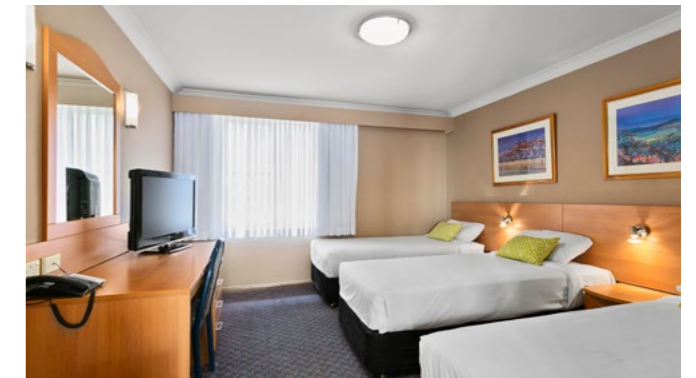
### Accommodation Snapshot



The Quality Inn is ideally located, just minutes from the Nepean River, the International Regatta Centre, Western Sydney University, shops, cafés, restaurants and much more. But with two onsite restaurants you don't have to venture far from the comfort of your well-appointed room or suite. Some rooms feature a hot tub for the ultimate in relaxation and accessible suites are also available.

### Room Types

- Standard Suite
- Deluxe Suite
- Spa Suite
- Bunk Rooms



261 Mulgoa Road,  
Penrith NSW 2750  
02 4734 5555  
info@qualityinnpenrith.com.au  
qualityinnpenrith.com.au



## Quest Penrith



### Accommodation Snapshot

★★★★★ Apartment  115

Quest Penrith is a stunning new accommodation experience for business and leisure travellers for both short and long term stays in a studio or one and two bedroom apartments. A short stroll from Penrith Railway station and Westfield Penrith, Quest is ideally placed to explore and enjoy Panthers World of Entertainment, the Sydney International Regatta Centre the Joan Sutherland Performing Arts Centre and more.

### Room Types

- Studio Apartments
- One bedroom apartments
- Two bedroom apartments



83 Lord Sheffield Circuit,  
Penrith NSW 2750  
02 9136 1100  
questpenrith@questapartments.com.au  
questapartments.com.au

## Value Suites



### Accommodation Snapshot

★★★★★ Apartment  63

Value Suites is a short walk from Emu Plains Train Station and just a five-minute drive from Penrith's shops, cafés and attractions. This self-catering accommodation includes a kitchenette, dining table and desk – perfect for business trips. Value Suites is perfectly placed to explore and enjoy the Great River Walk, the historic Arms of Australia Inn Museum and Penrith Regional Gallery.

### Room Types

- One Bedroom
- Two Bedroom
- Studio Suites
- Queen Suites
- Twin Suites



Billington Place,  
Emu Plains NSW 2750  
02 4735 4433  
penrith@valuesuites.com.au  
valuesuites.com.au

## Blue Cattle Dog Motel

**Street Address:**  
249 Mamre Rd, St Clair NSW 2759  
**Telephone:** 02 9670 3050  
**Email:**  
bluecattledog@nightcaphotels.com.au  
**Property Website:**  
bluecattledog.com.au  
**Car Park Details**  
Free parking in outdoor hotel carpark

Room Types	Total Rooms: 34*
<ul style="list-style-type: none"> <li>• Studio queen</li> <li>• Studio family room</li> <li>• Studio family</li> <li>• Studio twin queen</li> <li>• Studio twin queen with spa</li> <li>• *including total no. of apartments</li> </ul>	

## Cables Wake Park

**Street Address:**  
405 Jamison Road, Penrith NSW 2750  
**Telephone:** 02 4732 2537  
**Email:** info@cableswakepark.com.au  
**Property Website:**  
cableswakepark.com.au/stay  
**Car Park Details**  
Free on-site visitor carpark

Room Types
<ul style="list-style-type: none"> <li>• Private doubles or singles</li> <li>• Dorm rooms ( for up to 80)</li> </ul>

## Castlereagh Conference Centre

**Street Address:**  
297 - 305 Old Castlereagh Road,  
Castlereagh Penrith NSW 2750  
**Telephone:** 02 4729 0012  
**Email:** academyaccom@bigpond.com  
**Property Website:**  
castlereaghacademy.net.au  
**Car Park Details**  
Free on-site unsealed car parking available

Room Types	Total Rooms: 23
<ul style="list-style-type: none"> <li>• 6 Cabins: 4 bedrooms in each cabin</li> </ul>	

## Colyton Hotel

**Street Address:**  
12 Great Western Hwy, Colyton  
Telephone: 02 9623 2266  
**Email:**  
colytonhotel@nightcaphotels.com.au  
**Property Website:** colytonhotel.com.au  
**Car Park Details**  
Free parking in outdoor hotel carpark

Room Types	Total Rooms: 30
<ul style="list-style-type: none"> <li>• Studio king</li> <li>• Compact king</li> <li>• Studio king and single</li> <li>• Studio twin queen</li> <li>• Studio twin single</li> </ul>	

## Edmund Rice Retreat and Conference Centre – Winbourne

**Street Address:**  
1315 Mulgoa Road,  
Mulgoa NSW 2745  
**Telephone:** 02 4773 5555  
**Email:** info@windbourne.org  
**Property Website:** winbourne.org  
**Car Park Details**  
Free on-site carpark

Room Types
<ul style="list-style-type: none"> <li>• Doubles or singles</li> <li>• Dorm rooms</li> </ul>

## Ingenia Holidays Nepean River

**Street Address:**  
Mackellar Street,  
Emu Plains NSW 2750  
**Telephone:** 02 4708 9553  
**Email:** nepeanriver@ahp.com.au  
**Property Website:**  
ingeniaholidays.com.au/nepean-river  
**Car Park Details**  
Free on-site car parking available behind a boom gate entrance

## Jamison Motel

**Street Address:**  
186 Smith St, Penrith NSW 2750  
**Telephone:** 02 4721 5764  
**Email:** jamison.hotel@alhgroup.com.au  
**Property Website:**  
jamisonhotel.com.au  
**Car Park Details**  
Free parking in outdoor hotel carpark

Room Types	Total Rooms: 10
<ul style="list-style-type: none"> <li>• Studio rooms</li> <li>• Family studio rooms</li> </ul>	

## Penrith Hotel Motel

**Street Address:**  
297 - 303 High Street,  
Penrith NSW 2750  
**Telephone:** 02 4721 2060  
**Email:** info@penrithhotel.com.au  
**Property Website:**  
penrithhotel.com.au  
**Car Park Details**  
Off street parking behind hotel

Room Types	Total Rooms: 14
<ul style="list-style-type: none"> <li>• Double (no aircon) - 8</li> <li>• Double (air con) - 6</li> </ul>	

## St Marys Parkview Motel

**Street Address:**  
465 Great Western Highway,  
St Marys NSW 2760  
**Telephone:** 02 9623 1227  
**Email:** parkview@idx.com.au  
**Property Website:**  
parkviewmotel.com.au  
**Car Park Details**  
Free parking in outdoor hotel carpark

Room Types	Total Rooms: 23
<ul style="list-style-type: none"> <li>• Standard room</li> <li>• Twin room</li> <li>• Family room</li> </ul>	

## Wallacia Hotel

**Street Address:**  
1590 Mulgoa Road,  
Wallacia NSW 2745  
**Telephone:** 02 4773 8888  
**Email:**  
reservations@wallaciahotel.com.au  
**Property Website:** wallaciahotel.com.au  
**Car Park Details**  
Free parking in outdoor hotel carpark

Room Types	Total Rooms: 26
<ul style="list-style-type: none"> <li>• Double/twin rooms</li> <li>• 2 bedroom suites</li> </ul>	

# Contact us today!

Penrith is the place to be for your next conference or event and it's in our nature to work with you to make it a success. Our enthusiastic team is ready to support you at each step.

Not only do we have great venues, accommodation and team building activities, our focus is connecting you to all the right people, places and information you need, so you can sit back and enjoy all the glory. So, what are you waiting for? Get in touch today and take the first step to event success!

**Shelley Lee**  
Activation and Event Development Officer  
[shelley.lee@penrith.city](mailto:shelley.lee@penrith.city)

For a comprehensive list of things to do and see in Penrith, go to [visitpenrith.com.au](http://visitpenrith.com.au)



## OFFICIAL BUSINESS EVENTS GUIDE

This Business Events Guide was produced and published in February 2025 by Penrith City Council.

### Design and production:

Design, finished art and prepress by Penrith City Council.

### Feedback:

We strive to give the best possible service to our readers and the events industry in Penrith. Your feedback will help improve the experience for you and other visitors in the future.

### Photo credits:

Please note some images used within this guide are exclusively owned by Destination New South Wales (DNSW).

### Important disclaimer:

Every effort has been made to ensure the accuracy of the information provided, however Penrith City Council does not accept responsibility for any consequences resulting from misdescriptions or inadvertent errors. Information in the prospectus was gathered in good faith but we recommend that its accuracy and currency be confirmed with individual operators.

### Copyright:

© 2025 Copyright of the Penrith "Events Prospectus Guide" vests in Penrith City Council. No part of this publication is to be reproduced in any manner, electronic, digital or otherwise without the written consent of the copyright holders.

Australian made: Designed, produced, printed and published in Australia





✉ Penrith City Council,  
601 High Street,  
OR  
PO Box 60,  
PENRITH NSW 2751

☎ 02 4732 8060

*2025 Edition*

 **PENRITH  
CITY COUNCIL**

[visitpenrith.com.au](https://www.visitpenrith.com.au)