

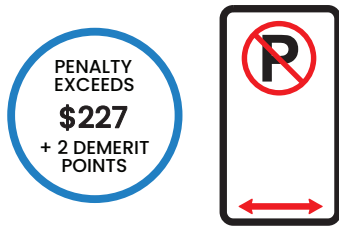
SCHOOL ZONE OFFENCES

WHAT ARE YOU RISKING?*

FACT Children are small, harder to see, behave unpredictably and are extremely vulnerable. They need you to take extra care when driving and parking around school zones.

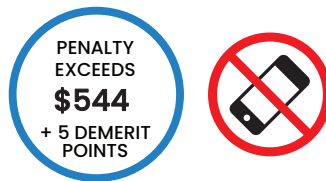
NO PARKING

You have two minutes to drop-off or pick-up passengers and must stay within three metres of your vehicle.



MOBILE PHONES

Extra fines apply for using a mobile phone in a school zone.



PEDESTRIAN CROSSING

In queued traffic, do not stop your vehicle on a pedestrian or children's crossing. Wait on the approach side of the crossing until there is space on the departure side to continue with the traffic queue.

Do not drop off or pick up passengers on a crossing.



NO STOPPING

You must not stop on a length of road to which a 'No Stopping' sign applies (unless otherwise signposted).

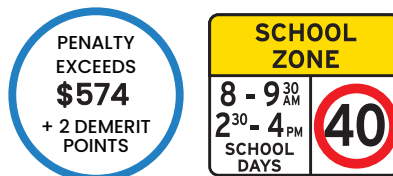
Yellow edge kerb lines are also used to indicate no stopping zones.

Drivers must not stop or park within 10 metres of an intersection without traffic lights and 20 metres of an intersection with traffic lights (unless otherwise signposted).



SPEED LIMIT

Within school zones and during school zone times, the speed limit is reduced to 40km/h.



U TURNS AND THREE-POINT TURNS

U-turns and three-point-turns are illegal on or near a pedestrian crossing and across a single or double white unbroken lines.



DRIVEWAYS, FOOTPATHS AND NATURE STRIPS

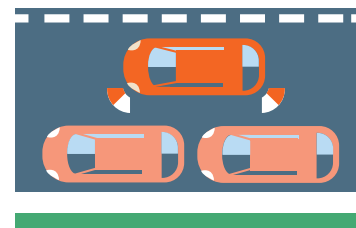
Do not park on, across or block access to driveways, footpaths, pedestrian ramps or on the nature strip area.

This can obstruct property access, damage assets and increase risk to pedestrians.



DOUBLE PARKING

Double parking is illegal and is very dangerous in a school zone.



* Fines current as of September 2023. Fines and demerit points are subject to change. For more information check out the NSW Centre for Road Safety website.